

Whooping Crane Monitoring Results Fall 2021

Mallory Jaymes



Why are we monitoring?

Whooping Crane Objective =
increase survival during migration

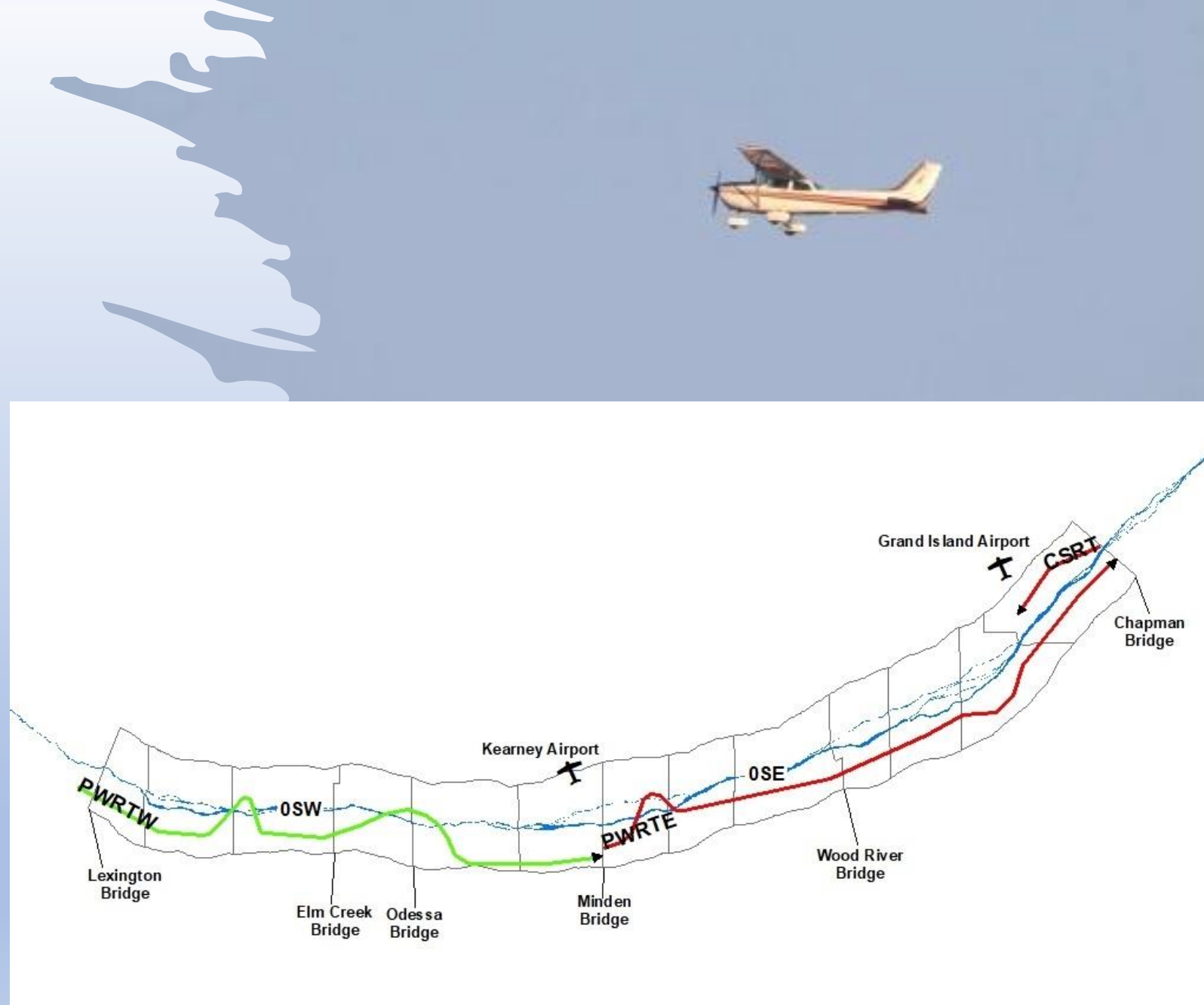
Species performance indicators

- Proportion of population
- Distribution of use
- Length of stay



Monitoring Methods

- Two Seasons
Mar. 6th - Apr. 29th
Oct. 9th - Nov. 15th
- Two aircraft each day
- On & off channel systematic transects



Monitoring Methods

Ground Crew

- Aids flight crew confirming species if needed.
- Searches when flights are cancelled due to weather and mechanical issues.



Data Collected

- Location
- Unobstructed channel width
- Nearest Forest
- Flow

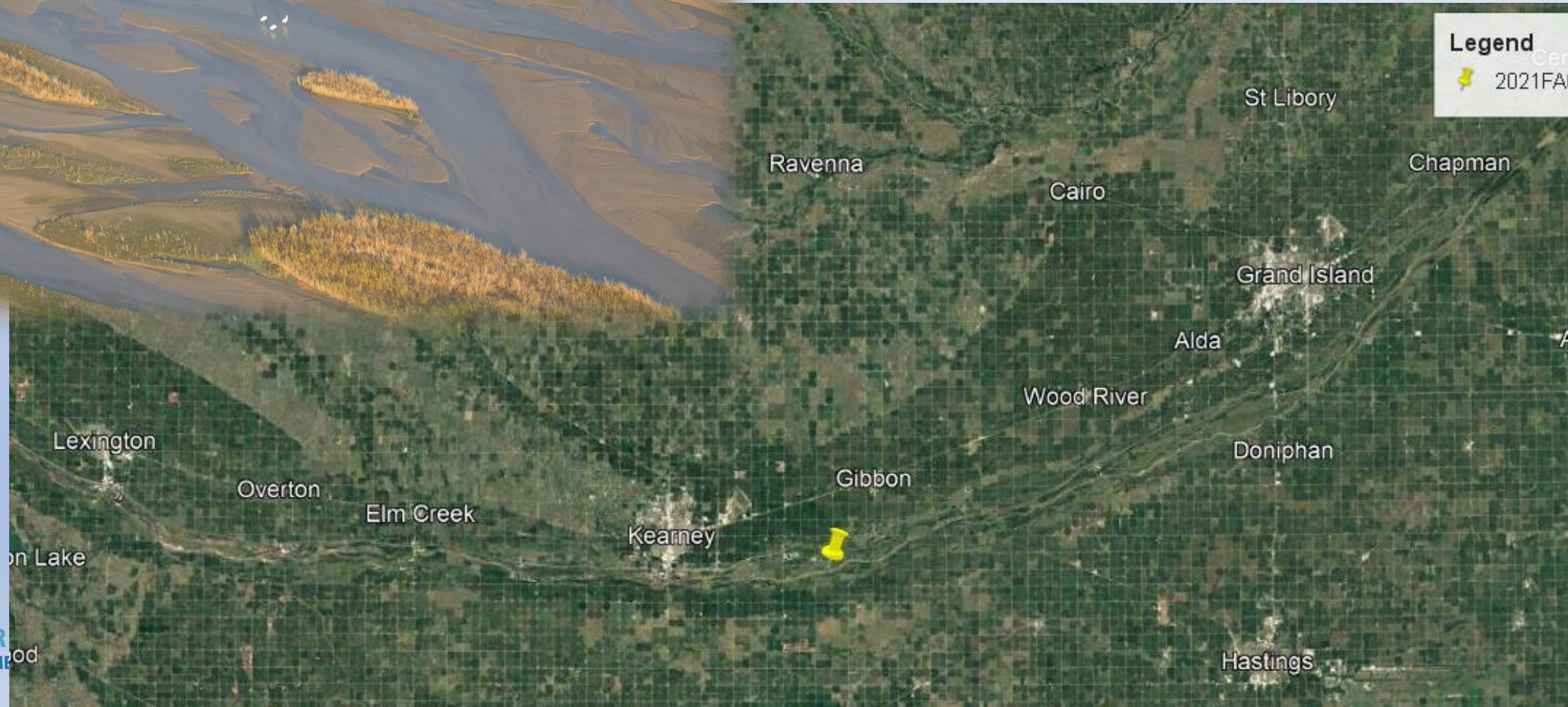


Fall 2021 season results

October 23

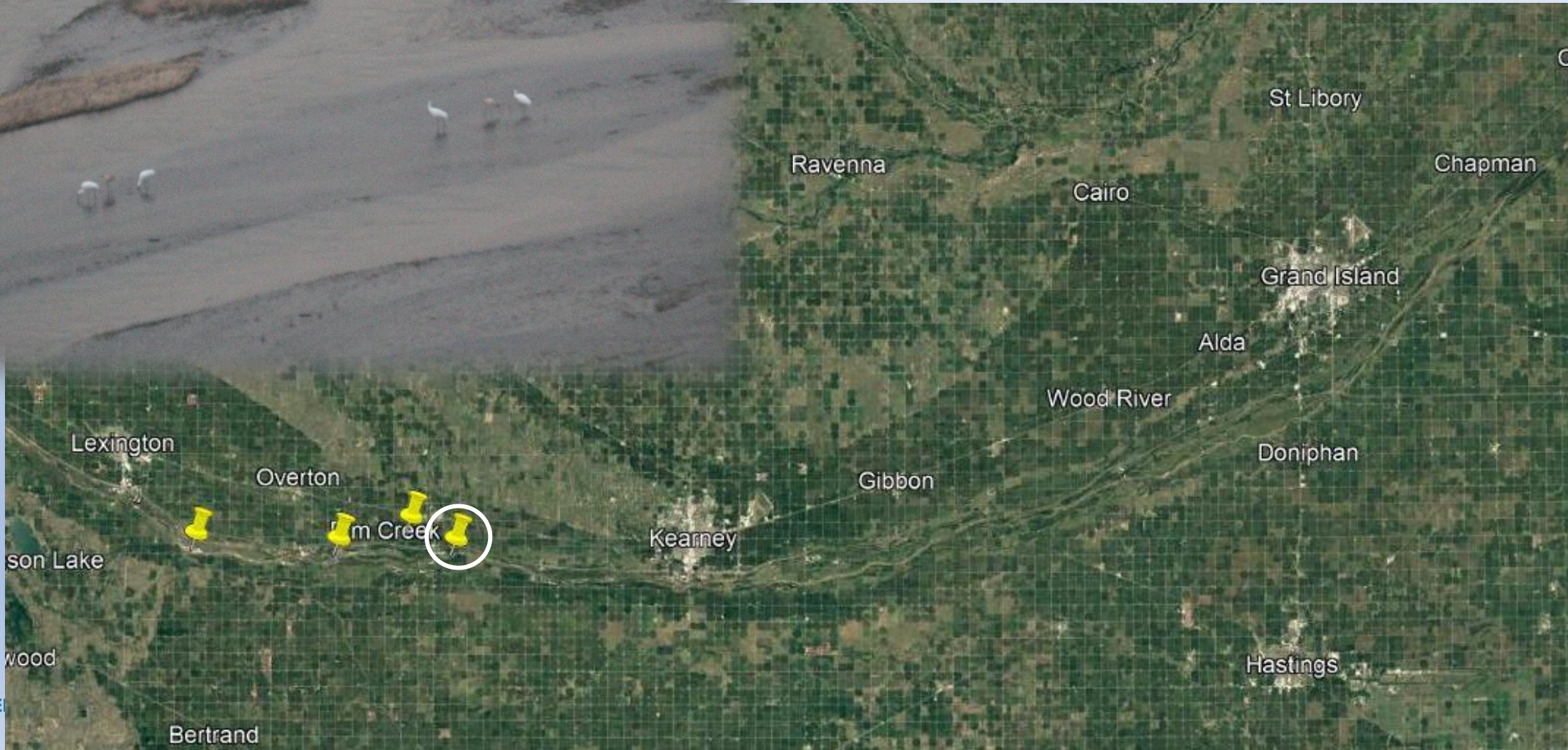
1st arrivals

3:0



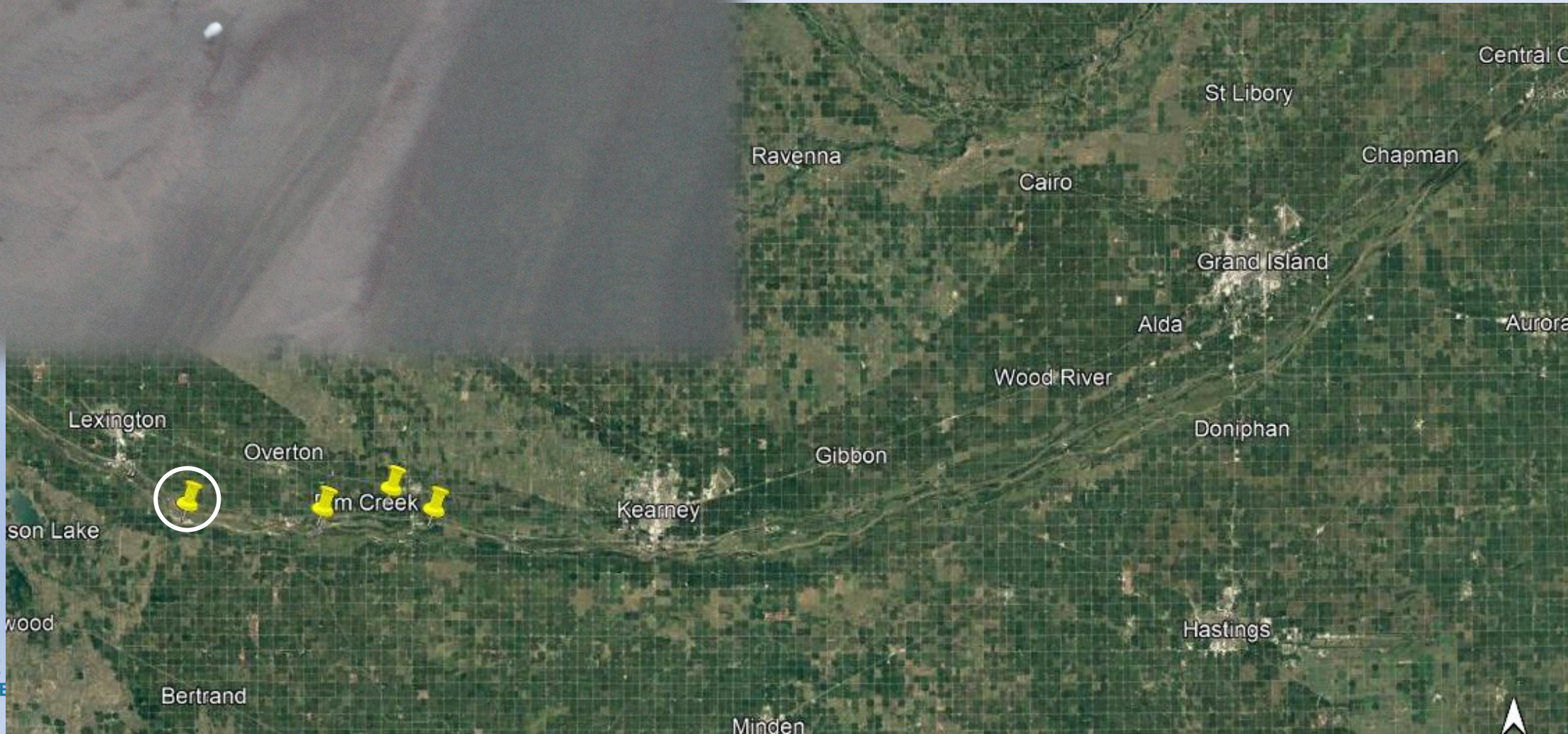
October 31st- Halloween

4:2



October 31st- Halloween

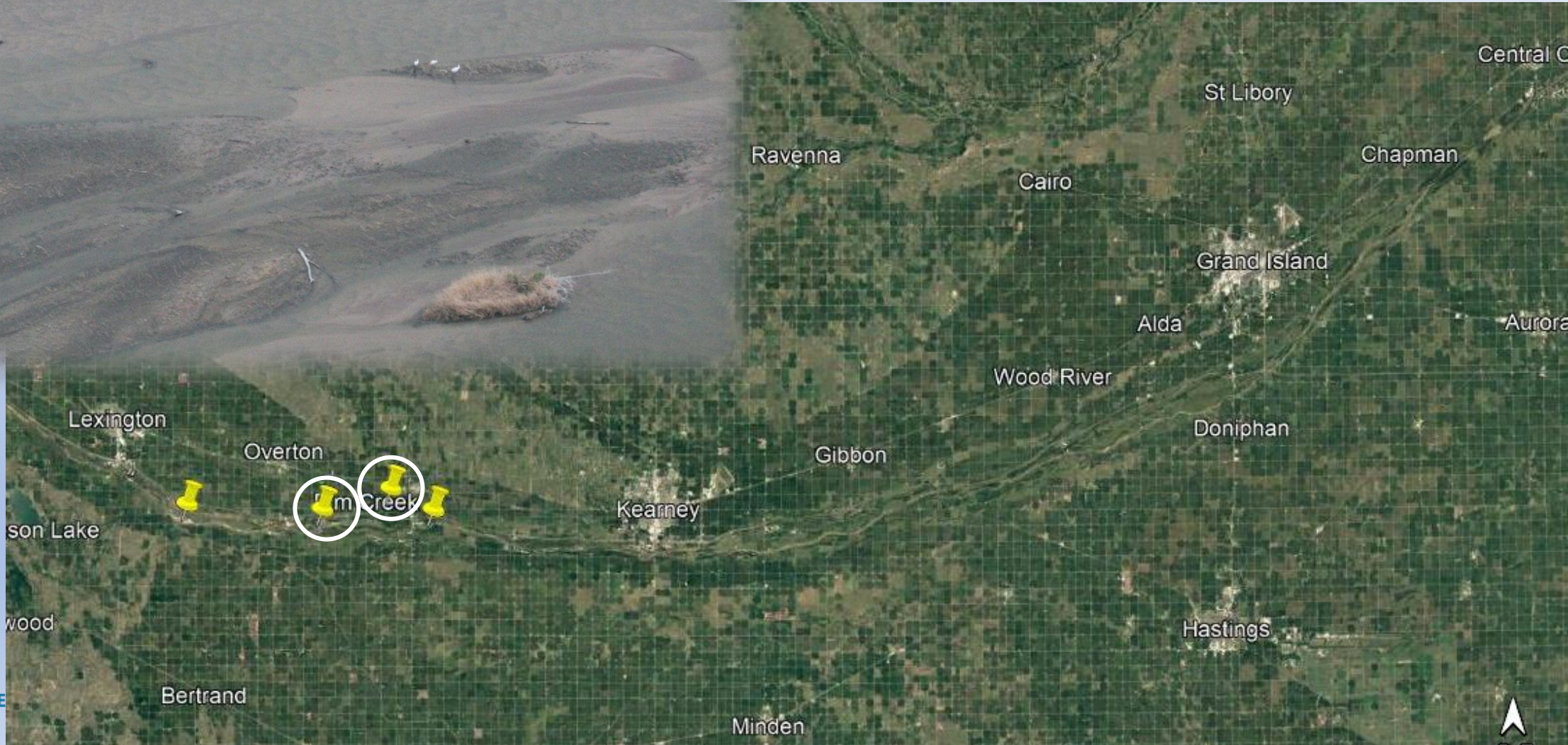
8:2



20 whooper day!

October 31st- Halloween

2:1 And a 1:0 inflight



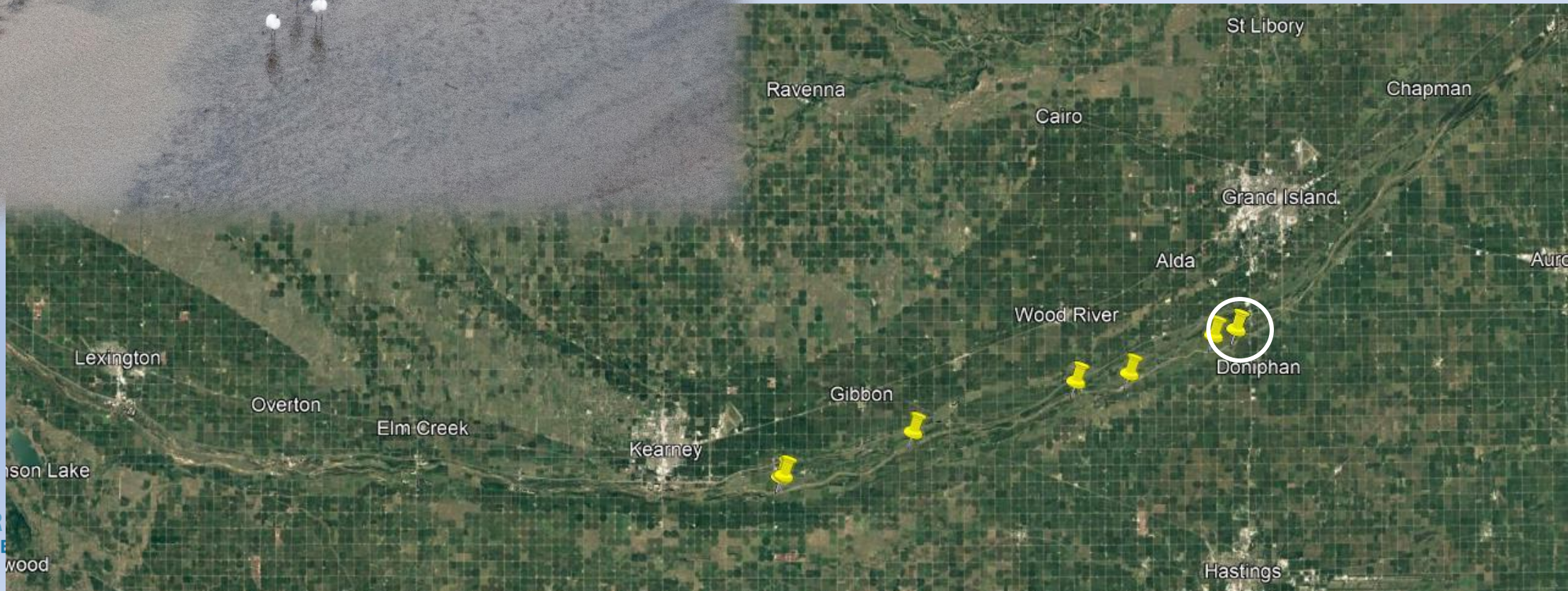
Fog set in...

November 3rd



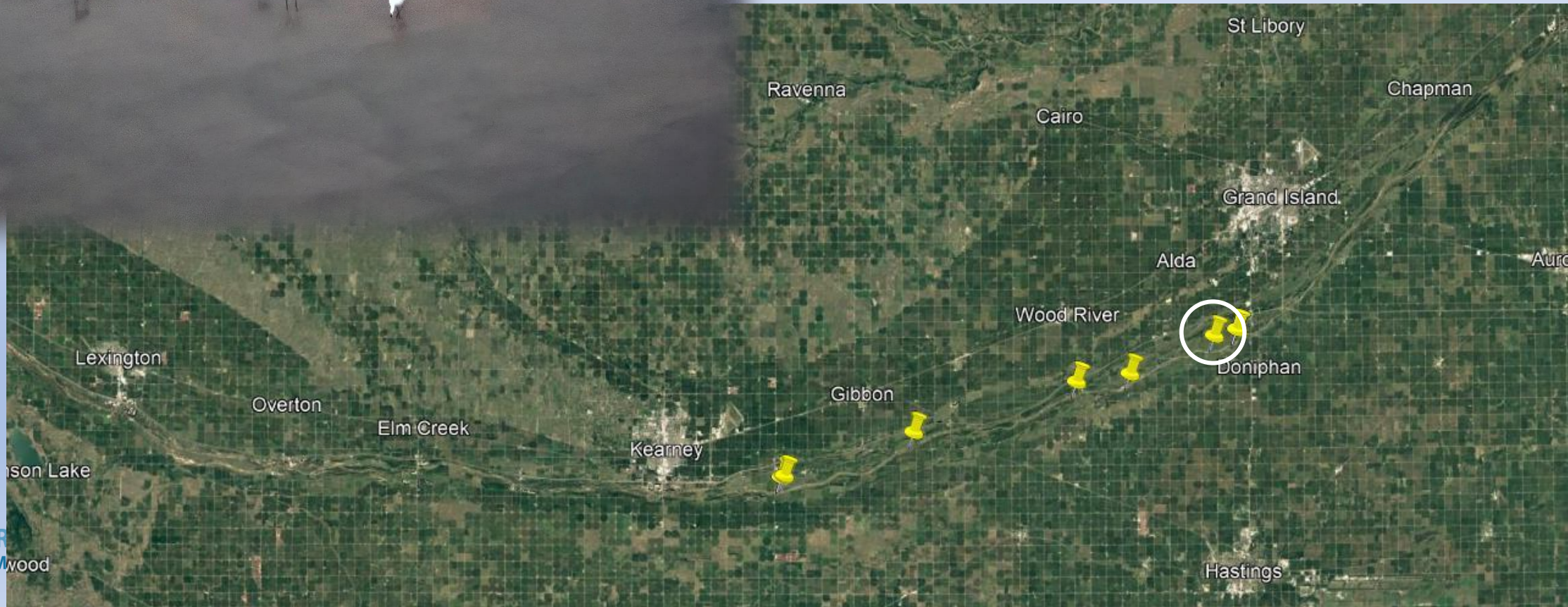
November 3rd

6:2



November 3rd

15:3



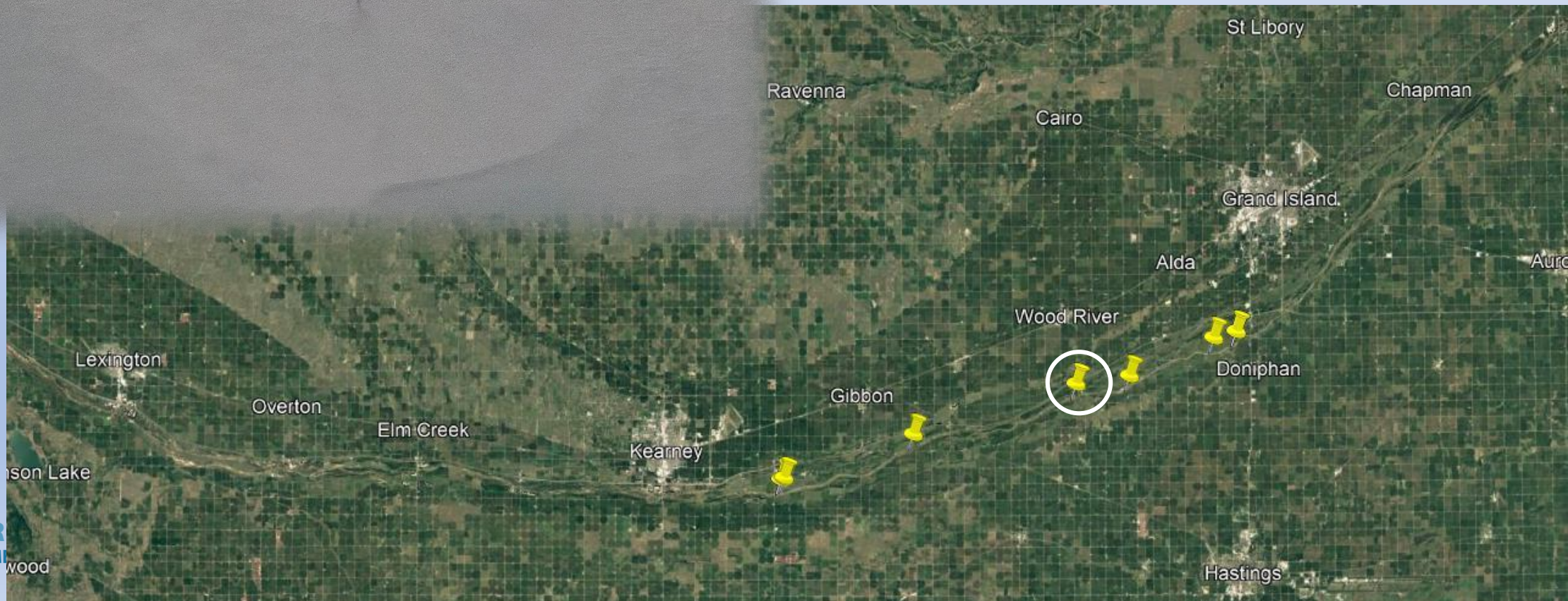
November 3rd

13:2



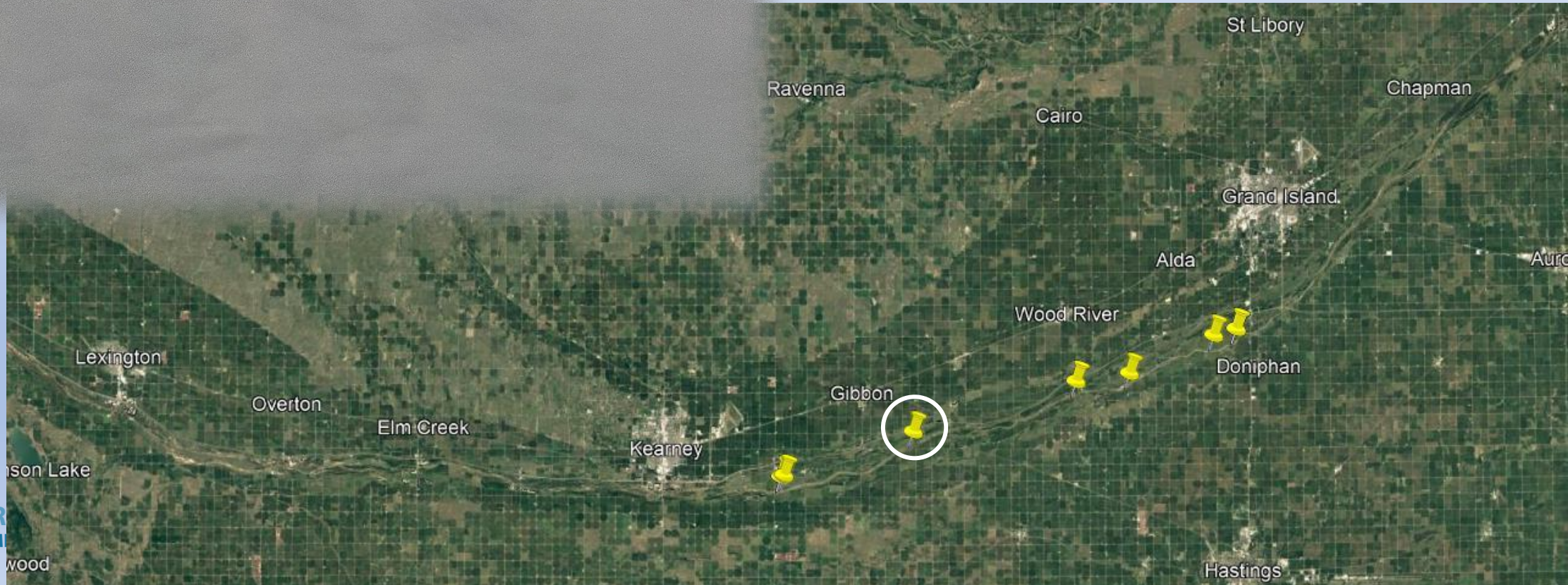
November 3rd

4:0



November 3rd

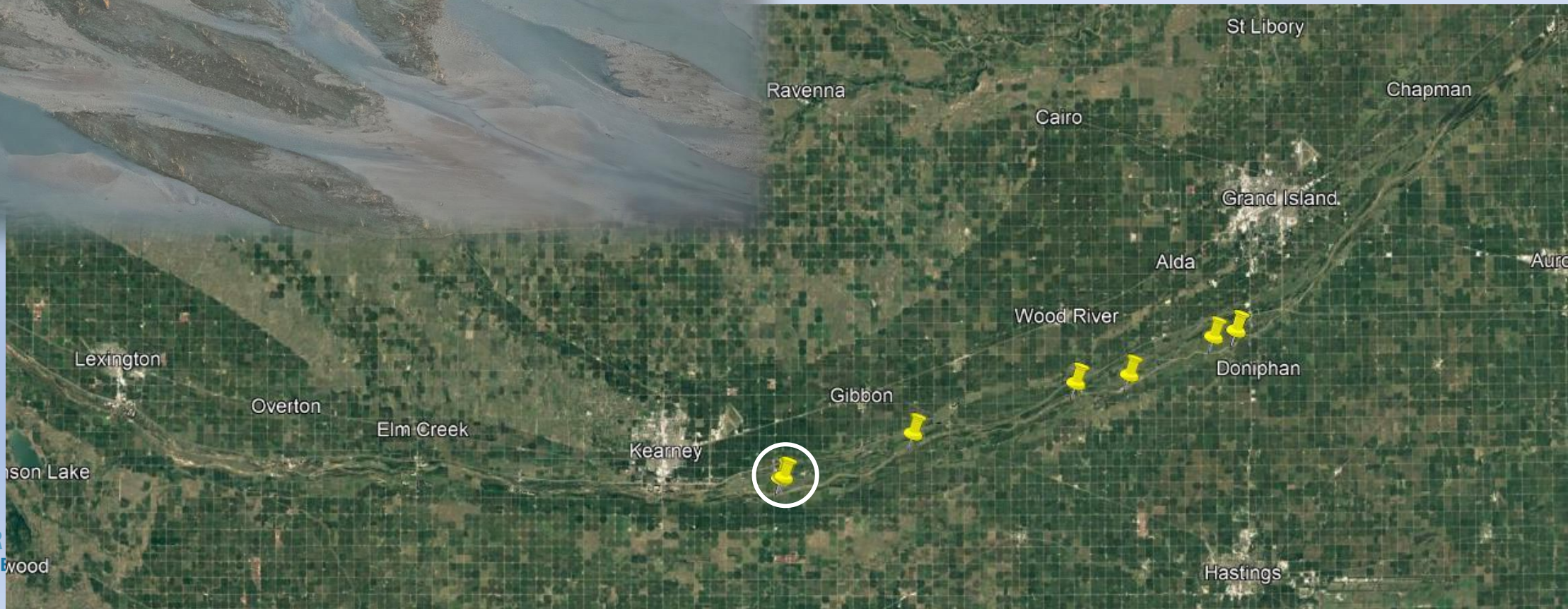
2:1



November 3rd

56 whooper day!

6:2





Nov. 4th



Nov. 5th



39:7

Nov. 6th

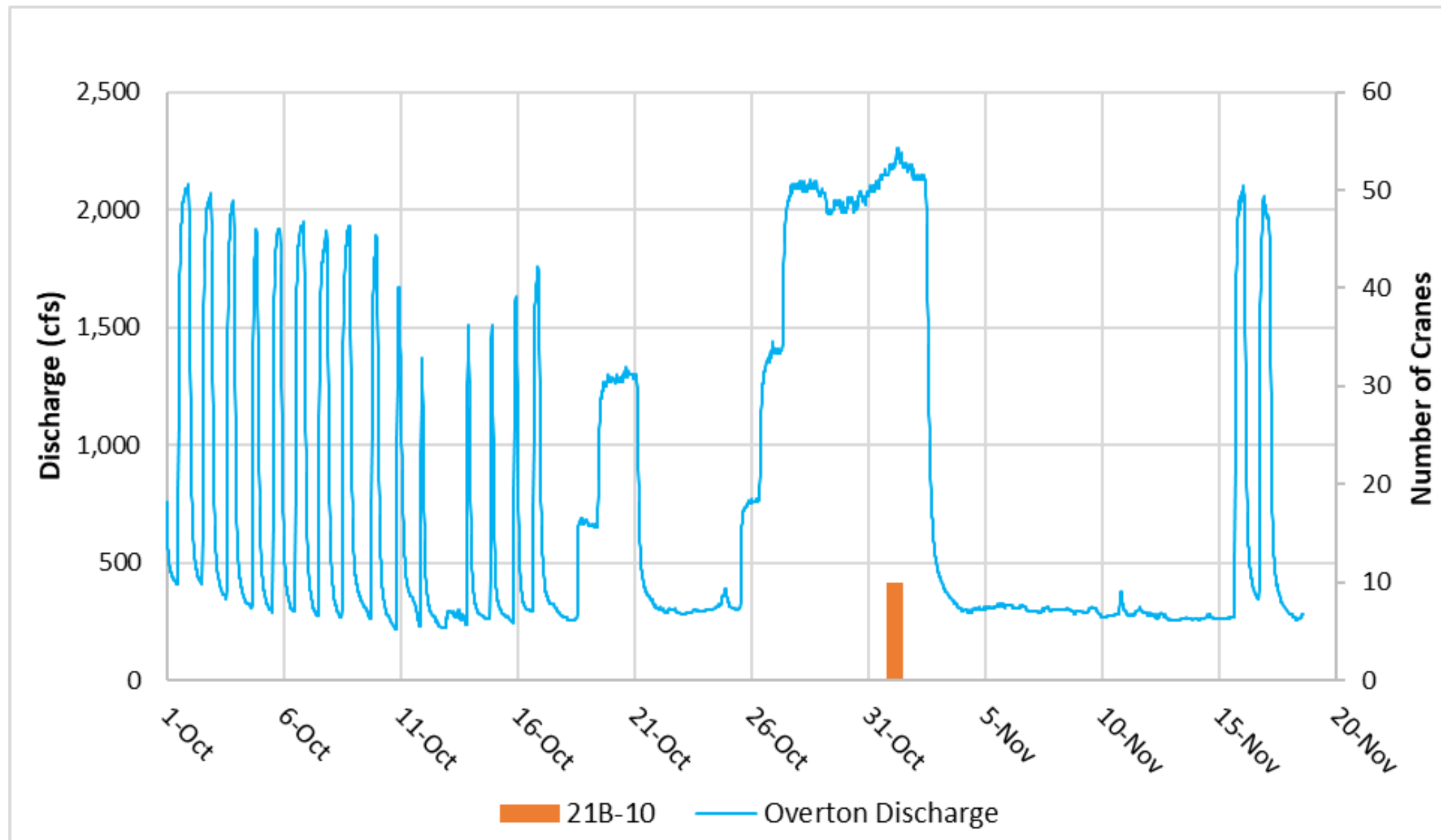


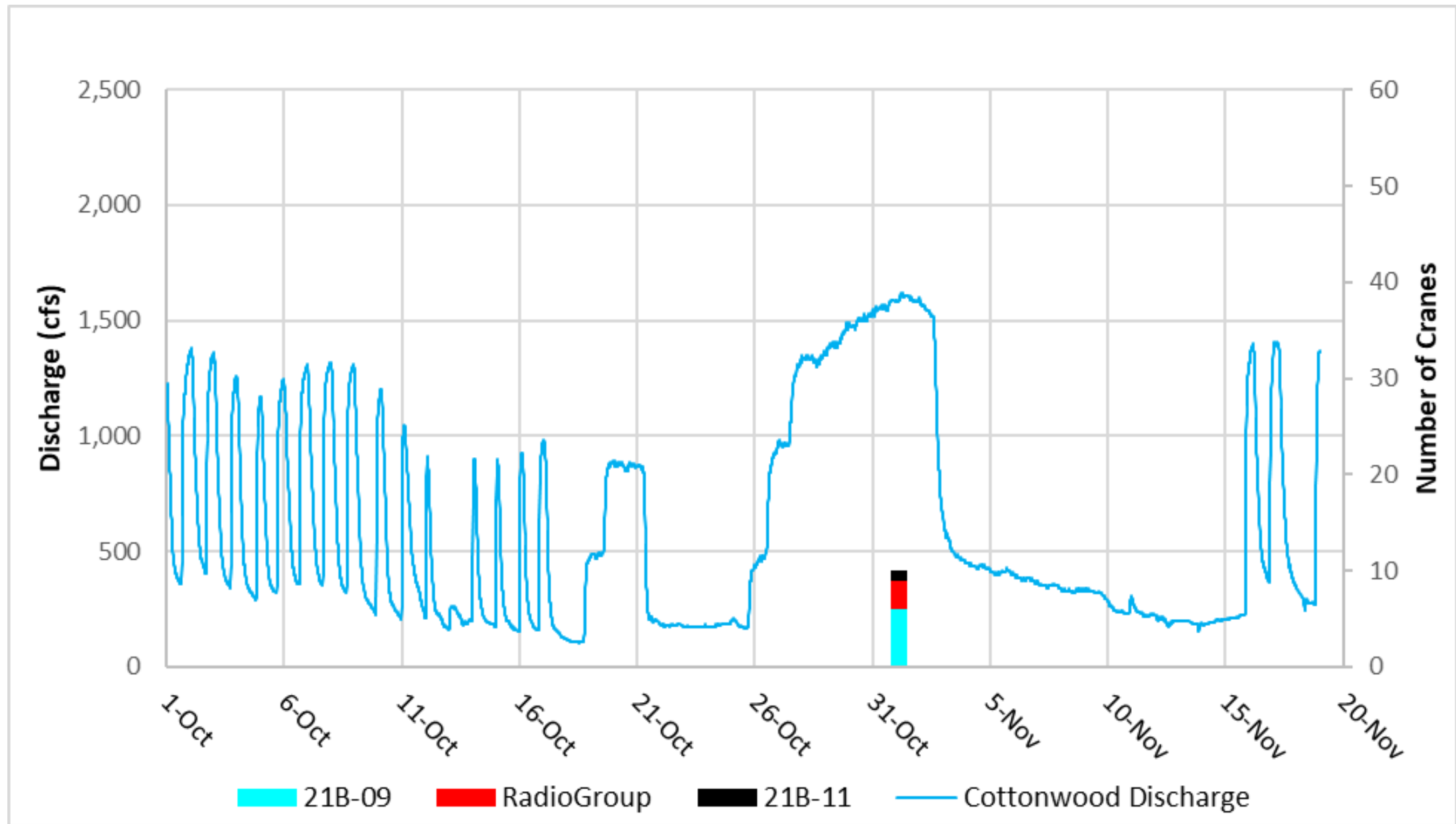
39:7
Nov. 7th

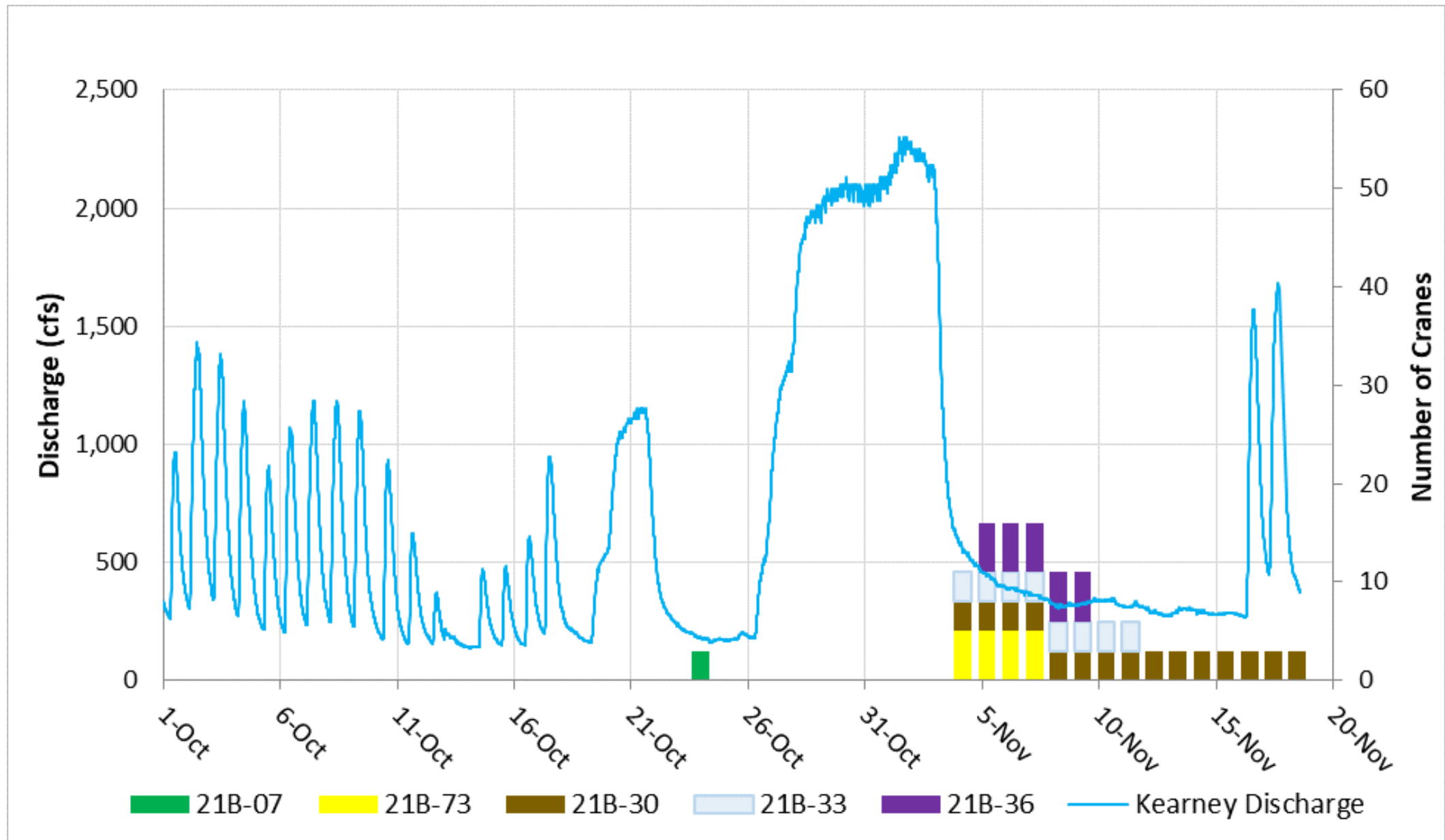


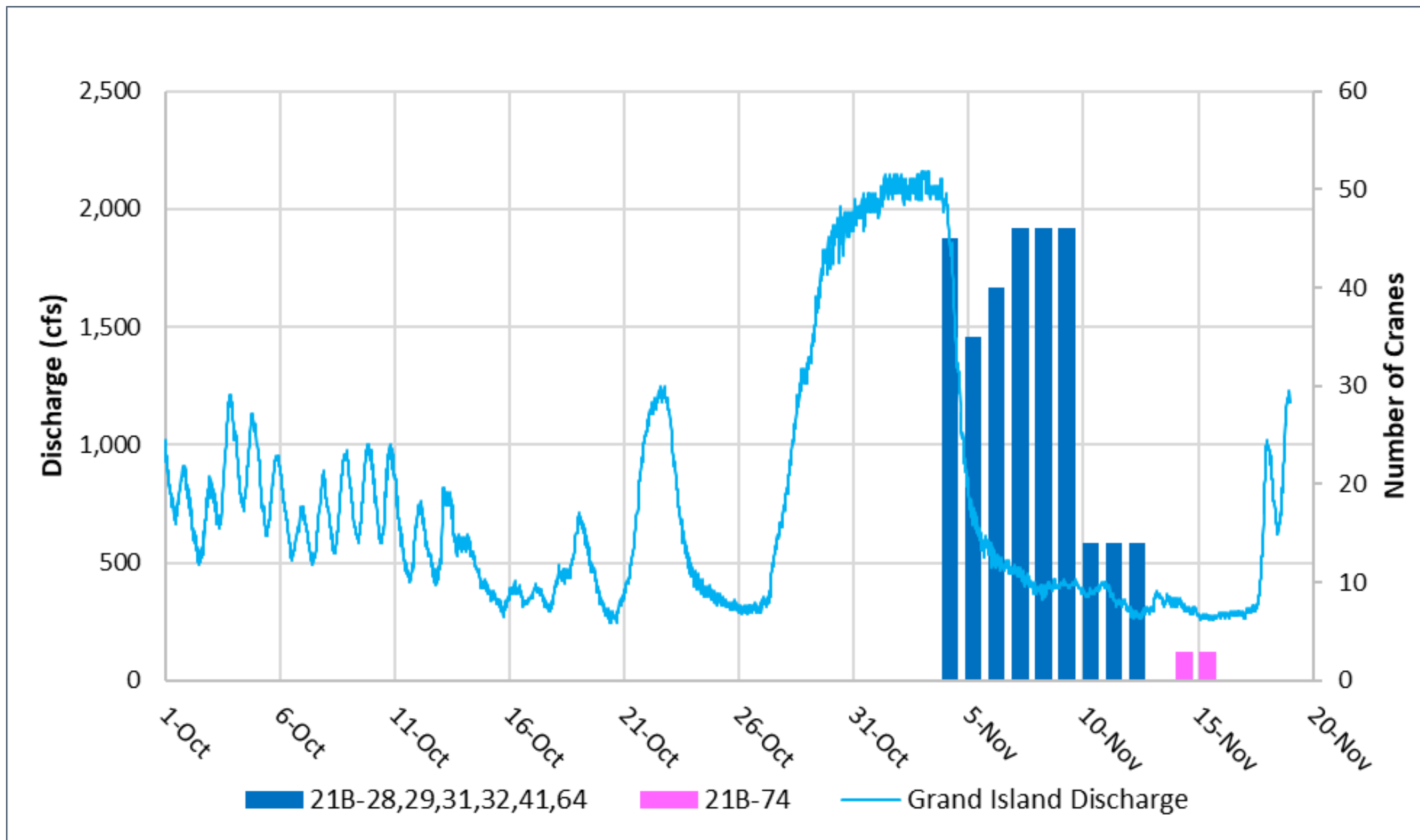
Season for the Record Books

- Largest one day count
57 whoopers
- Previous one day count records both occurred in 2017
Spring: 38
Fall: 21

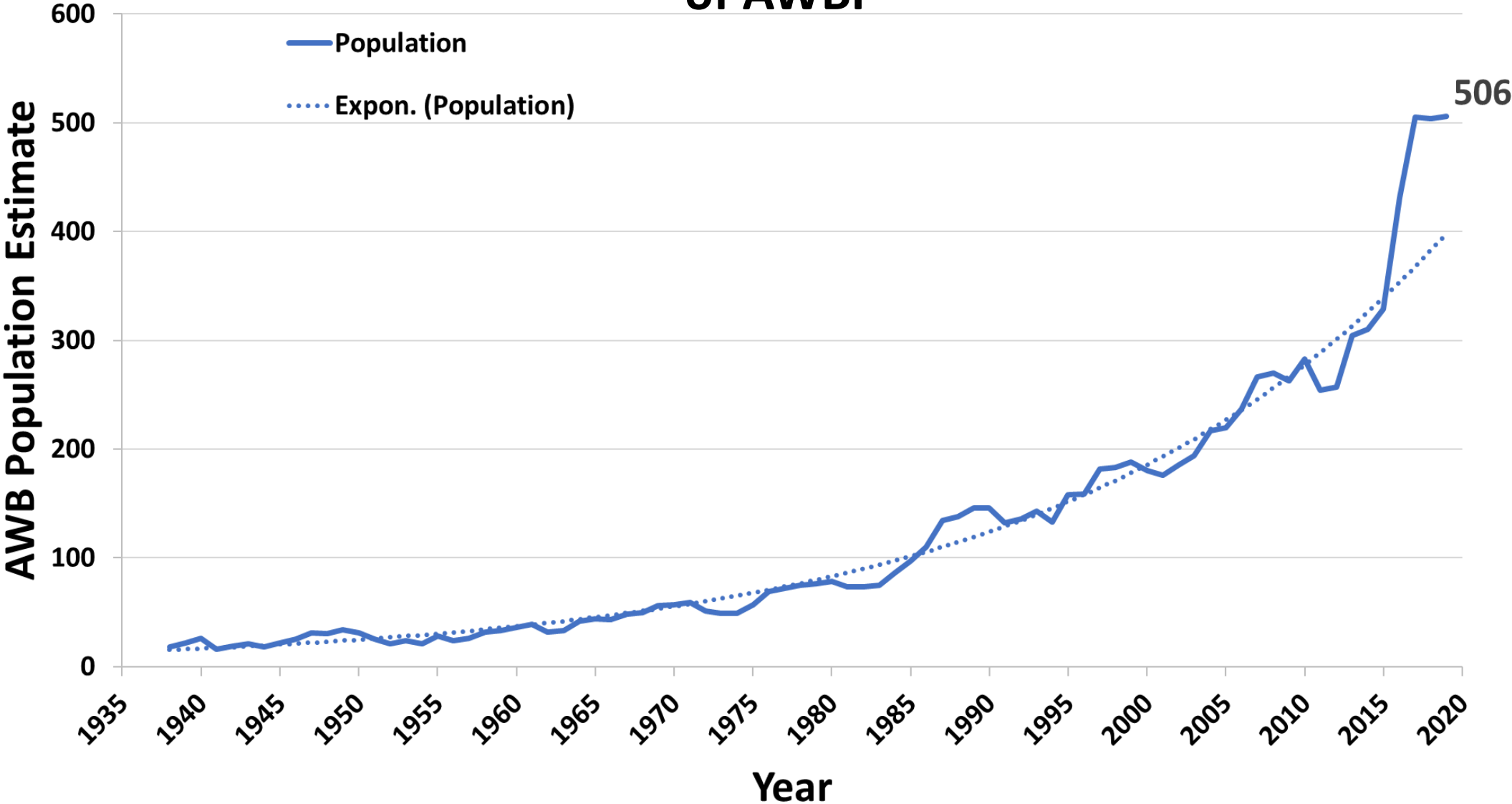




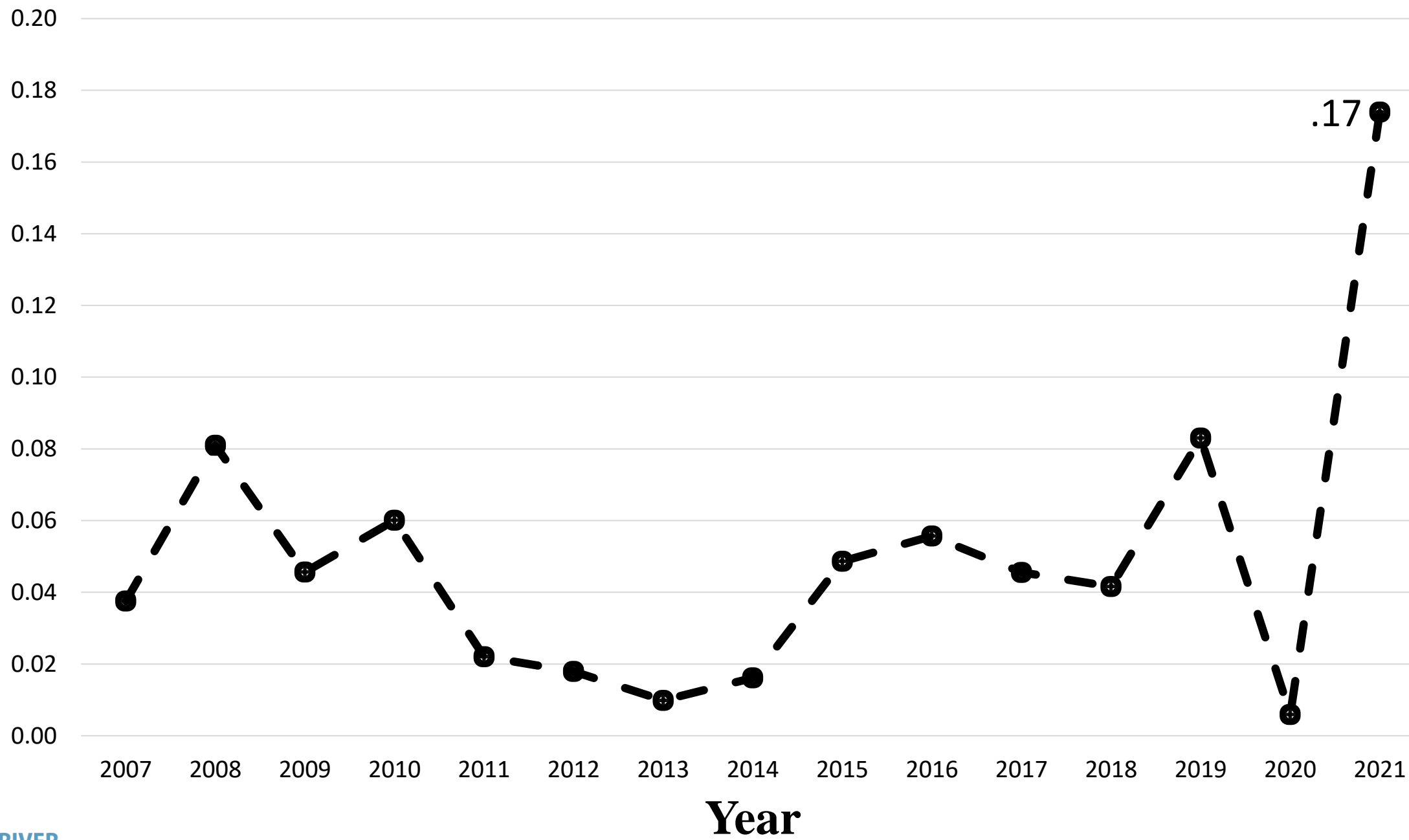


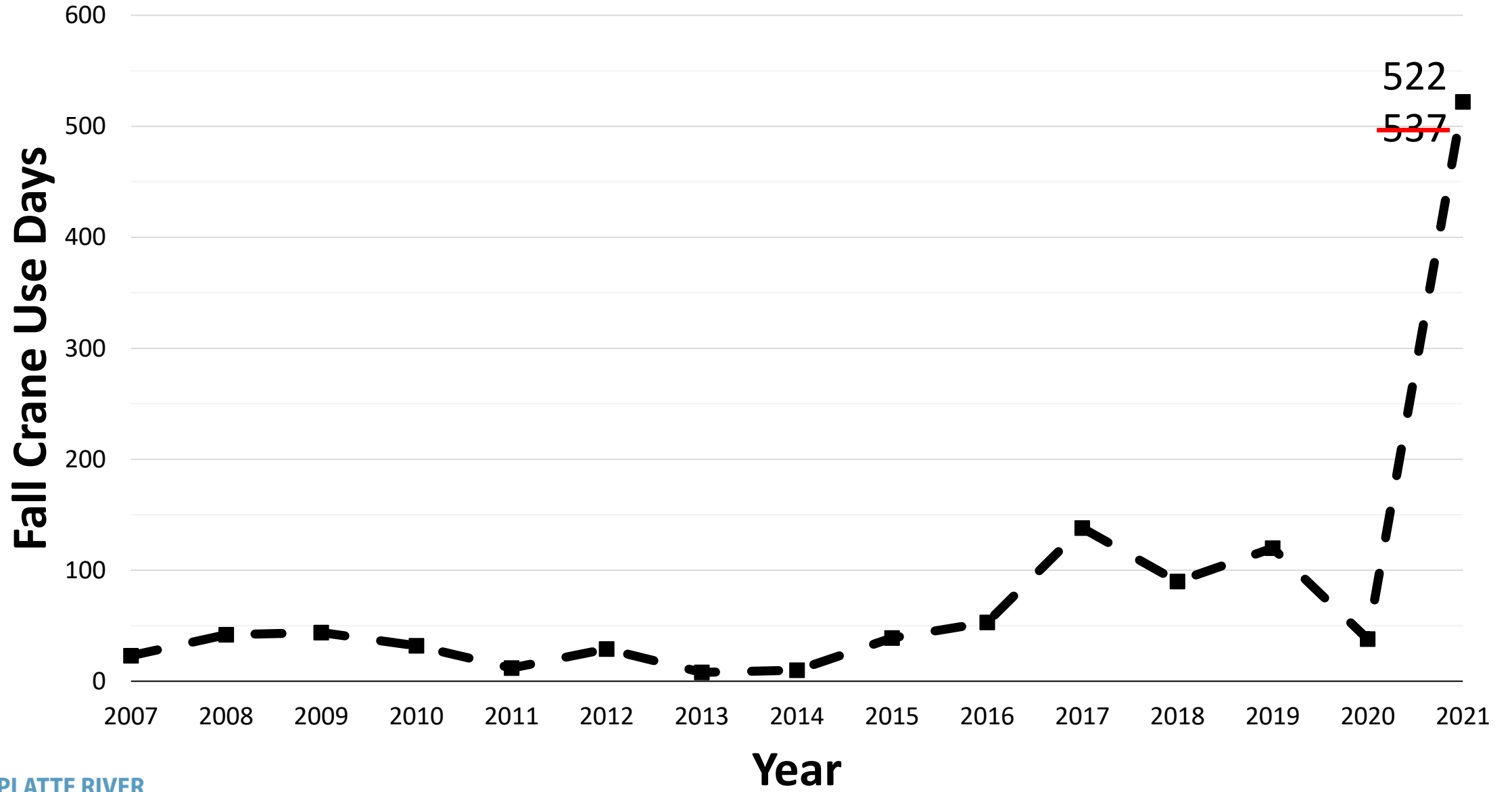


FWS Winter Survey Population Estimates of AWBP



Fall Proportion of AWB Population





Changes to the Fall 2021 Report

- Table 1
 - Old version of table 1 is now organized by crane group in Appendix A
 - PRRIP - USFWS comparison table
 - PRRIP side of table does not incorporate data from groups our monitoring did not observe
 - Calculation of PRRIP crane use days and proportional use does not incorporate USFWS data not observed by PRRIP
- Unobstructed channel width measured from fall imagery instead of spring.
- Hydrographs include stacked bars representing crane groups.



Questions?